

Hui Manu-o-Kū April 2024 Meetup

*“To enhance awareness, appreciation,
understanding and conservation of
manu-o-Kū.”*



What is the "Hui Manu-o-Kū"?

- The Hui Manu-o-Kū is a group of conservationists and citizens that all have one thing in common: an interest and admiration for White Terns, or manu-o-Kū.
- This group has formed to ensure that the official bird of Honolulu is taken care of and watched after.
- We developed a citizen science initiative to help track the growing population in the city. Together, the Hui Manu-o-Kū and citizen scientists are working to ensure that the population is protected and cared for, so that they continue to thrive in Honolulu.
- Coordinating our efforts for the benefit of the terns:
 - Protect active nesting sites
 - From predators, disruptive tree trimming
 - Return fallen chicks to their nesting spots
 - Identify threats to their urban habitat and breeding success
- Increasing public awareness of the birds
- *"It's all about the terns!"*

Our Mission: To enhance awareness, appreciation, understanding and conservation of manu-o-Kū.



Thanks to our Partners!



Mahalo to our volunteers!

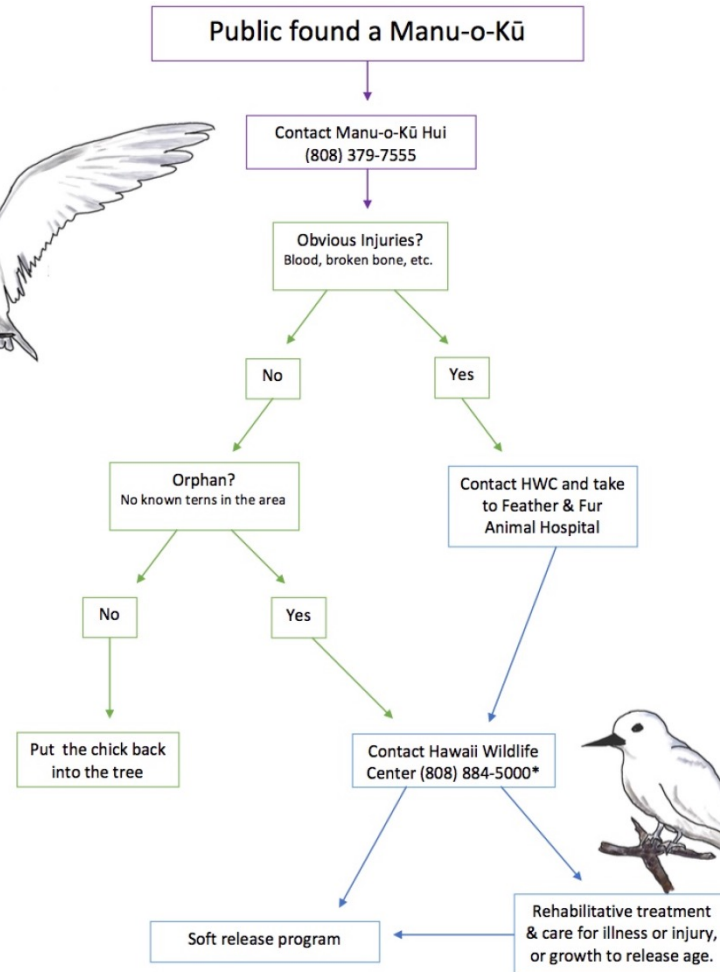


Mahalo Nui to Leah Kerschner!

White Tern Rescue/Reunite/Rehab/ Release Partnership

Our Partners:

- Hui MOK –
Rescue, Reunite
- HWC – Rehab
- Honolulu Zoo –
Hosts the Soft
Release Program



White Tern Rescue/Reunite/Rehab/ Release Partnership

- 7/24 Manu o Kū Hotline
- Trained volunteer first responders
- Applying lessons learned in the field to develop new tools and techniques for successfully reuniting fallen chicks.
- Learning that the window of time during which we can successfully reunite chicks is wider than we thought – as many as 36 hours for larger chicks.



Manu-o-Kū Hotline (2023)

- Calls for rescues: 137
- Chicks successfully reunited with parents: 63
- Transported to Feather & Fur Animal Hospital or HWC Satellite at Zoo: 59
- Call volume for rescues YTD up nearly 300% over 2022!



Manu-o-Kū Hotline

YTD 2024

- Calls for rescues: 51
- Chicks successfully reunited with parents: 33
- Transported to Feather & Fur Animal Hospital or HWC Satellite at Zoo: 18
- Call volume for rescues YTD up 20% over 2023



White Tern Rescue/Reunite/**Rehab**/ **Release** Partnership

- Hawaii Wildlife Center
 - Partnering with Feather and Fur Animal Hospital on Oahu
 - “Wheels for Wildlife” volunteer drivers transport injured and orphaned birds to F&F and airport
- White Terns are a significant portion of the patients treated by HWC annually.



White Tern Soft Release Program

Hawaii Wildlife Center satellite facility at the Zoo is now up and running!

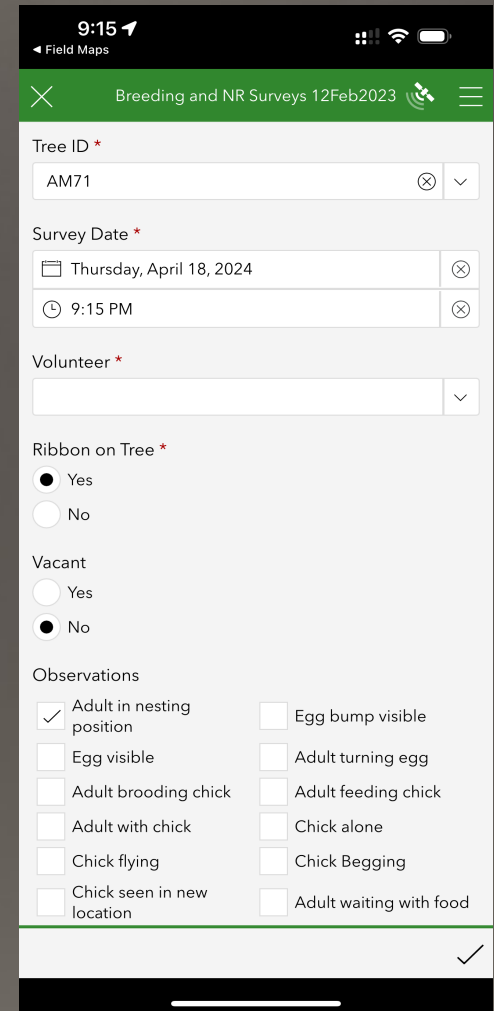
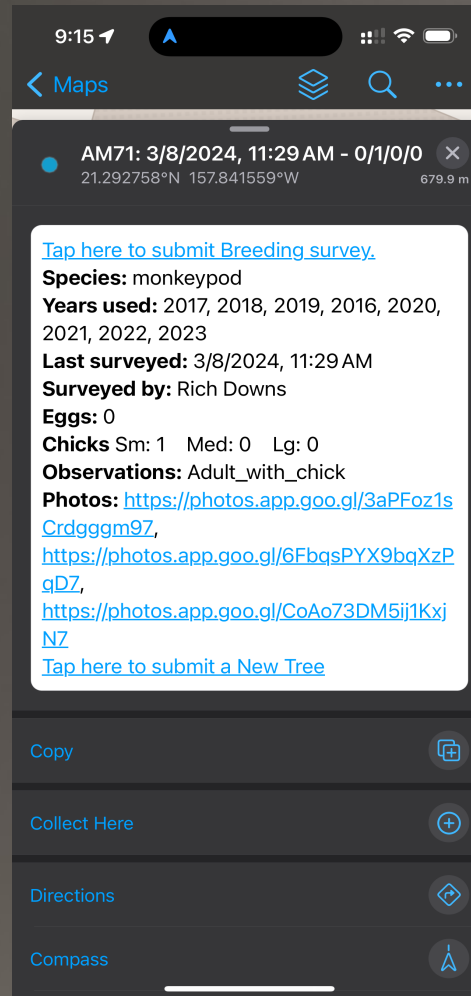
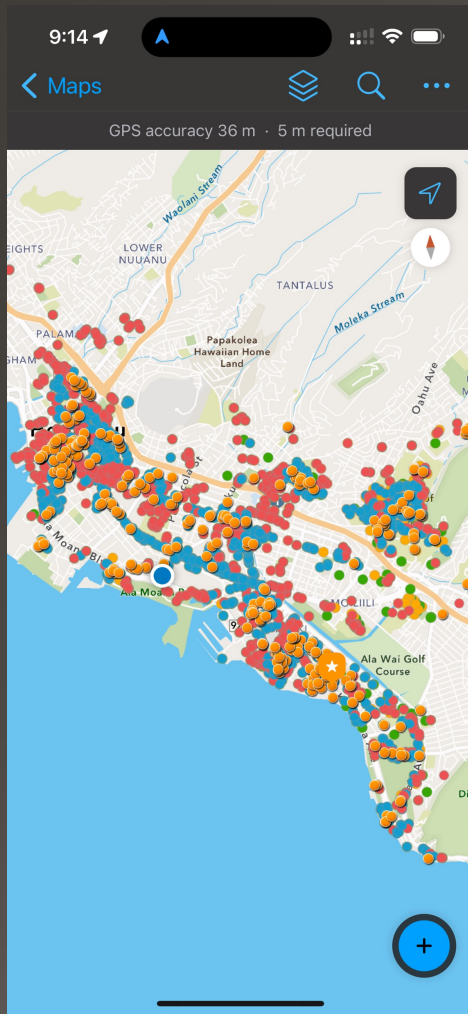


White Tern Soft Release Program

- HWC has installed a 12' x 30' x 10' flight cage at the Zoo, similar to the one pictured here.
- Minimizes need to transport chicks to the Big Island for rehab.



White Tern Citizen Science Transitioned to ArcGIS Tools in 2023




Improved user experience for volunteers collecting data and enhanced ability to analyze and use the data we collect.


Transitioned to ArcGIS Tools



Improved user experience for volunteers collecting data and enhanced ability to analyze and use the data we collect.

Speaking of Skyline...


 Hawai'i Public Radio

  KHPR
Fresh Air NEXT UP: 4:00

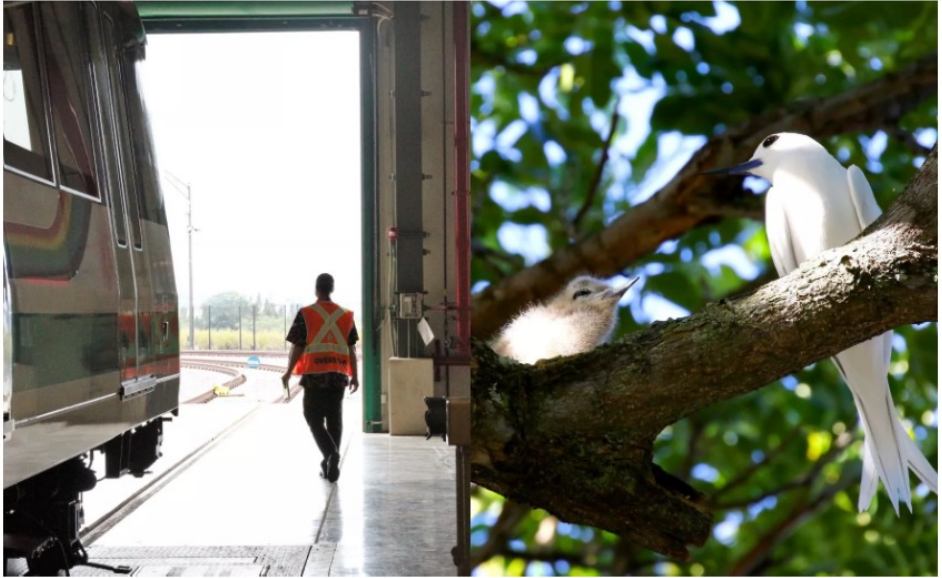
The Conversation

The manu-o-Kū is the new symbol of the Honolulu rail

Hawai'i Public Radio | By [Catherine Cruz](#), [Emily Tom](#)
Published June 16, 2023 at 4:39 PM HST

 LISTEN • 14:58

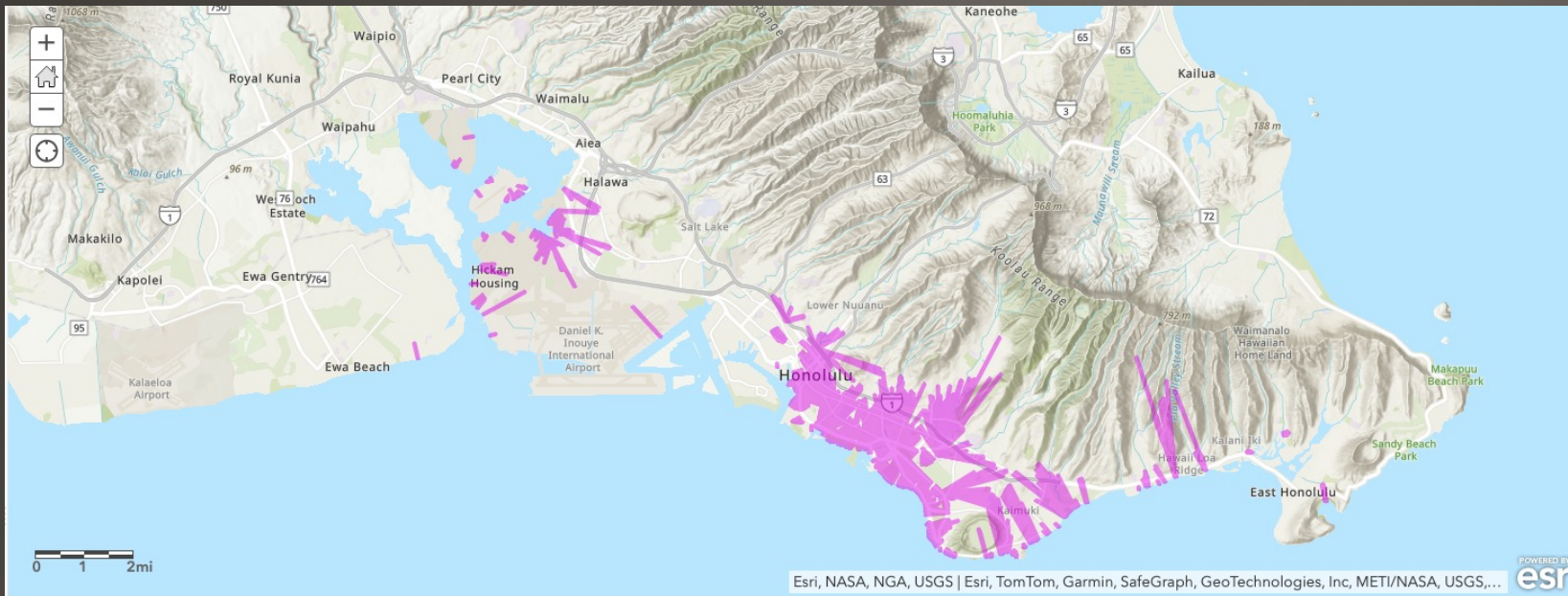


Speaking of Skyline...



Skyline first contact with nesting manu-o-Kū!

Transitioned to ArcGIS Tools



Nearest Coastline to All Trees - Connecting Lines (Features: 3298, Selected: 0)

Straight Line Distance (Miles)	Trees: TreeID	Trees: Date_Added	Trees: Tree_species	Trees: Scientific_Name	Trees: Notes	Trees: Latitude	Trees: Longitude	Trees: NestingSpotSharable	Trees: Years_Used
0.71	KS07	4/5/2016, 2:00 PM	Queensland Fig	Ficus sp.	SW corner of State Ag bldg property	21.30	-157.84	https://photos.app.goo.gl/VW1Z2u1bR8Ah9vvf6 , https://photos.app.goo.gl/RX7Fk4BFEDkbJcBCA , https://photos.app.goo.gl/ffQ9tvVCTJLkeAWD7	2017, 2018, 2019, 2020, 2021, 2022
0.71	TS37	2/20/2019, 2:00 PM	Fiddlewood		First tree makai of corner on DH side of Keakamakai St. fiddlewood tree	21.30	-157.85	https://photos.app.goo.gl/xZGTxhoHJHYw68K8	
0.71	LC30	3/23/2019, 2:00 PM	monkeypod	Albizia saman	2nd Monkeypod from ewa end of	21.30	-157.82	https://photos.app.goo.gl/ftuZwvD8K	2019, 2020, 2022

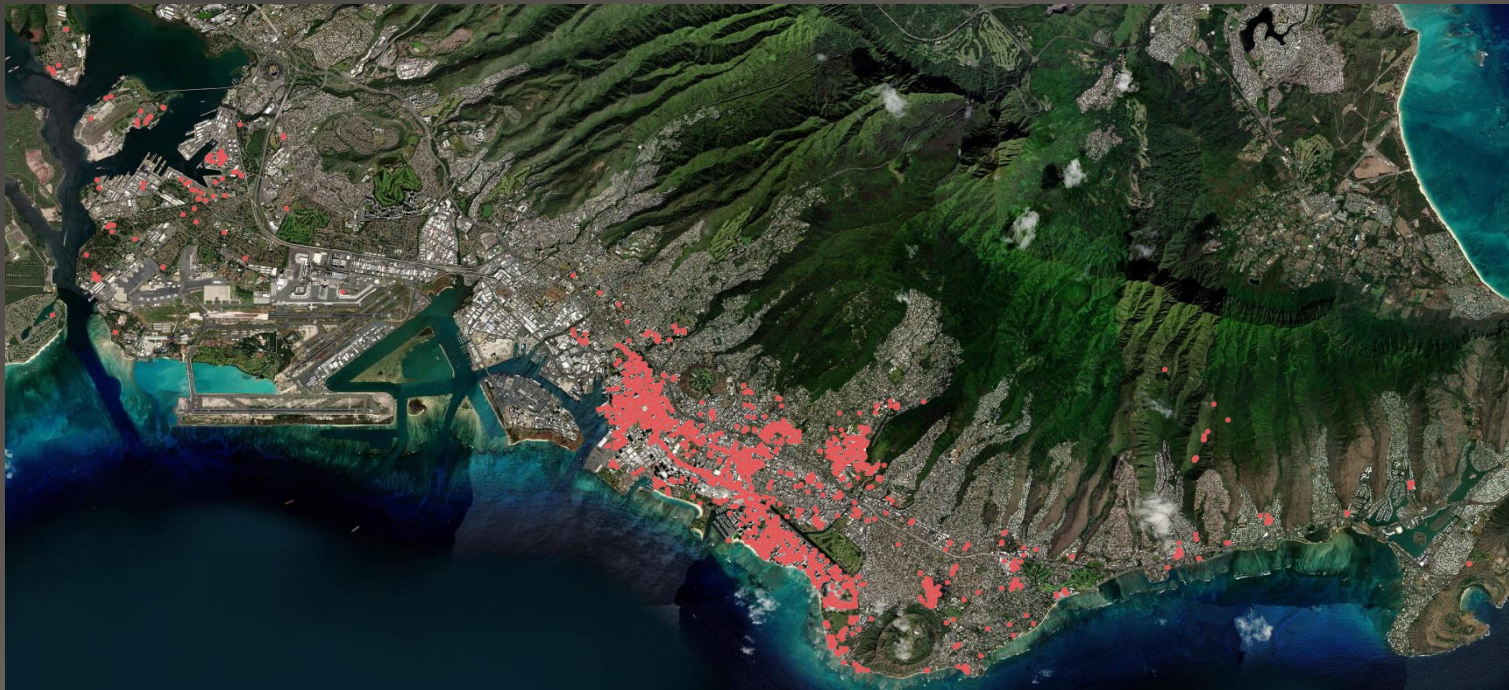
Calculating distance from each of the 3,000+ trees to the nearest coastline is a snap! (avg of 718m or .4 miles)

White Tern Research

Completed Census of Oahu MOK Population in 2023

Results being tabulated and analyzed:

- 3,596 breeding adults
- 50% increase over 2016 count
- Surveyed over 3,000 trees known to have been used for breeding or roosting
- Documented breeding in 1,486 trees
- Rich and Eric co-authoring scientific paper



First documented case of White Tern nesting on a palm frond on Oahu



First documented case of White Tern nesting on a palm frond on Oahu



First documented case of terns nesting on
a building ledge on Oahu (June 2023)



Pair returned to nest on building ledge of
Ag Science Building at UH this year



Pair returned to nest
on building ledge of
Ag Science Building
at UH

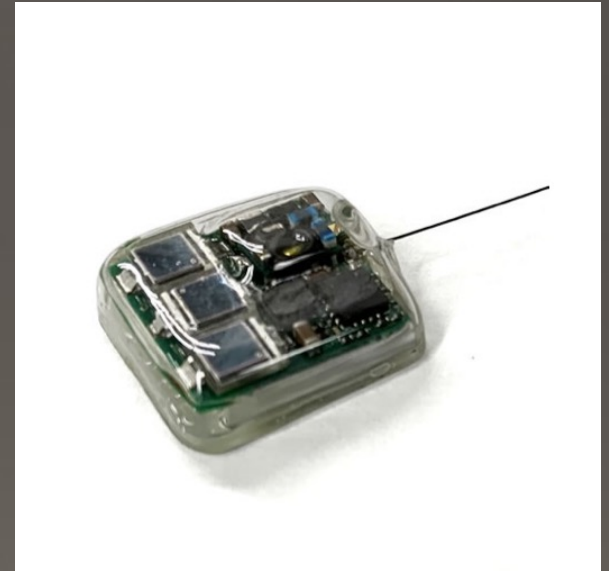


Evaluating humane methods to minimize threat of feral cat predation of nesting terns



Future White Tern Research: Tracking On and Off-Island Movement

- Partnering with KCC to begin study of White Tern movements on and off-island
- Anticipate using following technologies:
 - PIT Tags
 - VHF Telemetry
 - Satellite Tracking
- Tags finally small and light enough for use on White Terns
 - Solar VHF Radio tags: 1.4 grams
 - Solar Satellite tags: 5.5 grams



9th Annual Manu o Kū Festival

April 27, 2024

Photo by Melody Bentz

~SAVE THE DATE~

MANU O KŪ FESTIVAL

E KOMO MAI

Saturday, April 27th, 2024
10 a.m. to 2 p.m.

'Iolani Palace Coronation Lawn
Free and Open to the Public



Email lk@conservehi.org to volunteer!

Introducing "Aloha the manu o Kū"!

